

THE NEPTUNE

# GLITZ

VOL - 4 | ISSUE - 44 | JUNE - 2017 | ₹ 100

## architecture & interiors

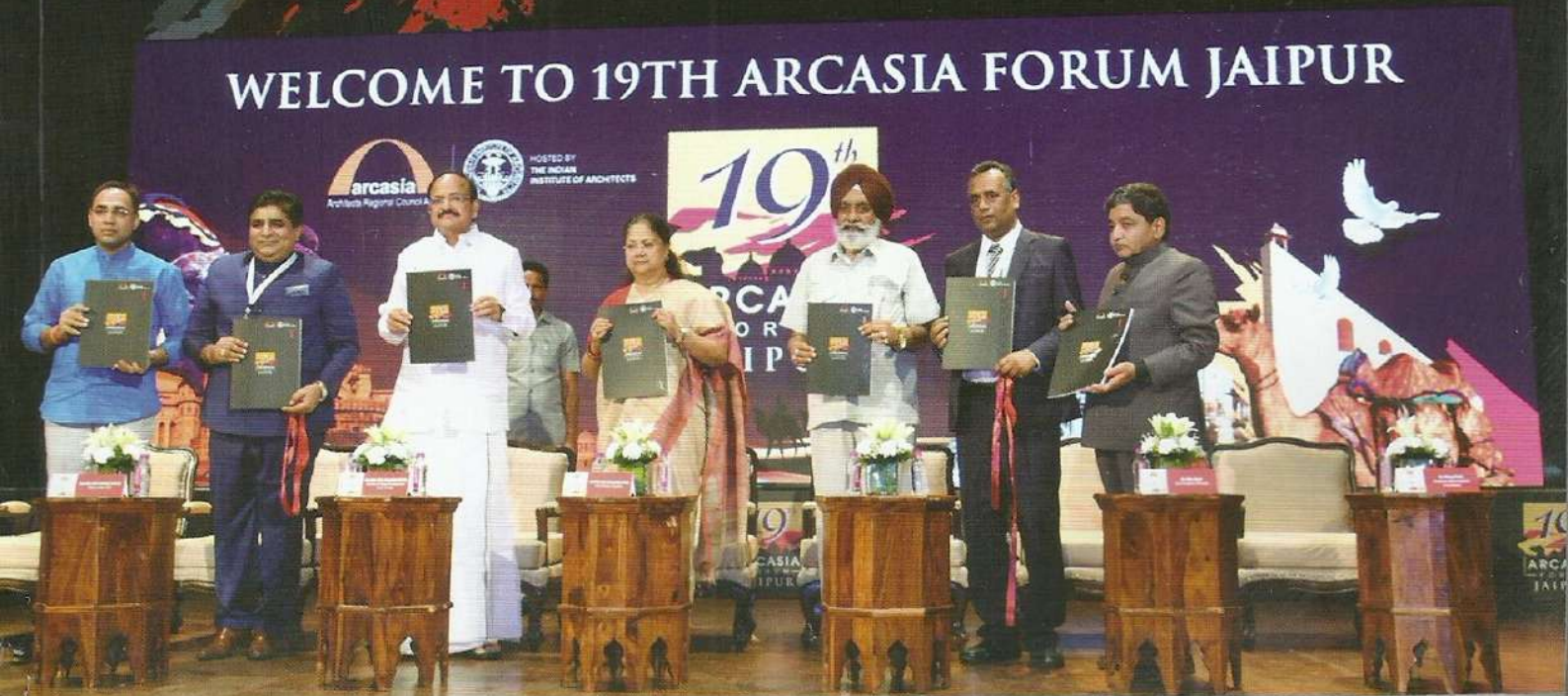
SPECIAL FEATURE ON

**19<sup>th</sup>**  
ARCASIA  
FORUM  
JAIPUR



HOSTED BY  
THE INDIAN  
INSTITUTE OF ARCHITECTS

### WELCOME TO 19TH ARCASIA FORUM JAIPUR



project

FINALIST ENTRY

## For Emerging Architect of the Year

GLITZ  
architecture  
& interiors

Design  
Honour **2017**  
For Creative Excellence



### THE PLUS HOUSE, Panipat

#### FACT FILE:

Project Name : **The Plus House**

Location : Panipat, Haryana

Client : Payal & Vinod Juneja

Design Team : Ar. Ankita Sweety &

Ar. Pratyosh Chandan

Architect Firm: Studio An-V-Thot Architects Pvt. Ltd.

Built-up Area : 3650 sq ft.



**T**he project was perceived as a creation of rectangles within a square, which clearly took us to benefitting proportions during the planning. This was the answer to a rather questionable site which sat on an almost square plot 55' x 58', thus generating a challenge as well as curiosity to achieve a depth of travel and sight.

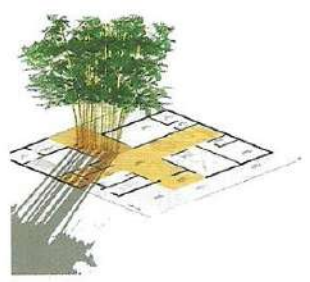
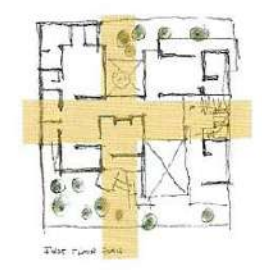
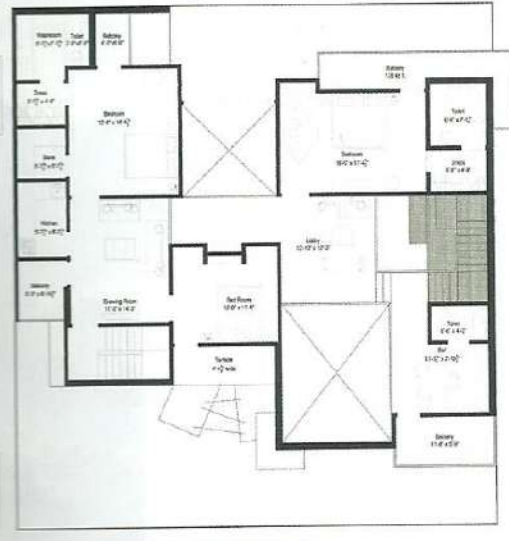
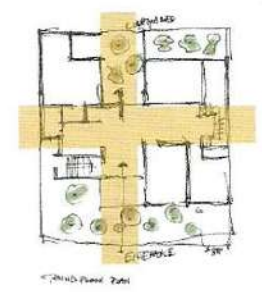
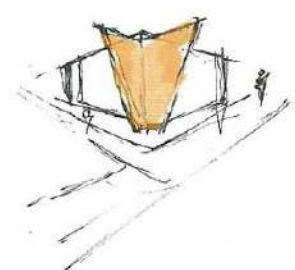
Speaking of facade, the complete 25' high structure can be seen as volumes and voids sharing spaces, overlapping and interchanging their behaviour as well as presence. The vertical edge of the corner is sliced open in a tapered hugging manner with MS

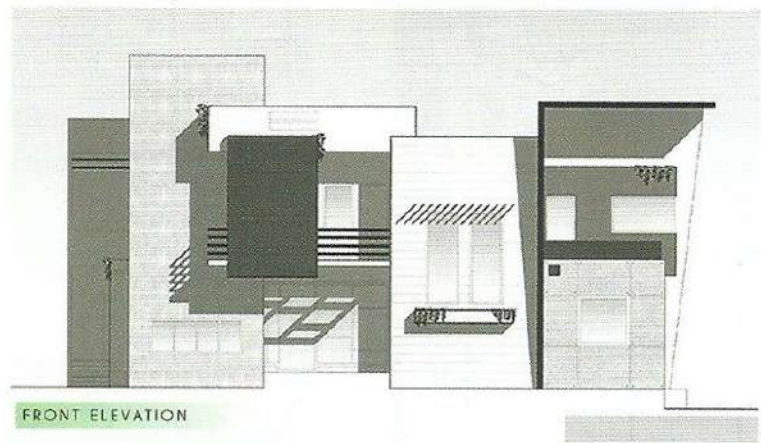
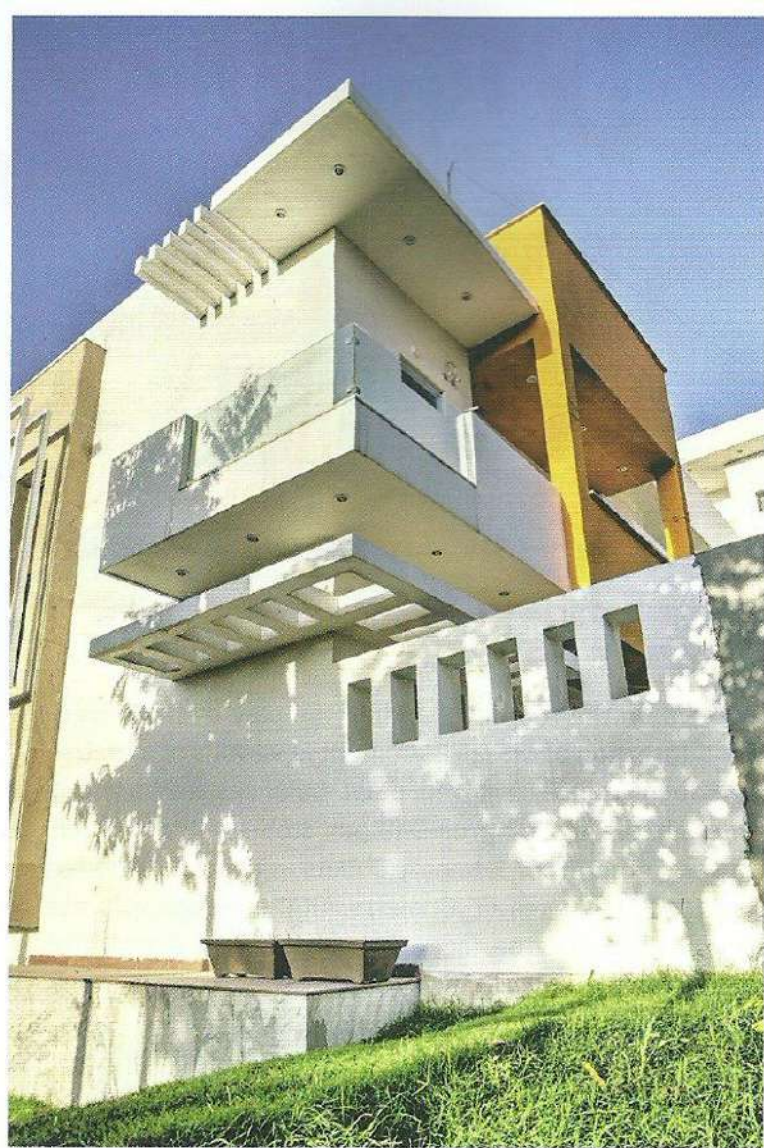


pergola on the roof level adding the play of shadows & light. Insertion of MS jali is eminent at various places. Use of sober Orange textured paint balances its harmony through the cladding of Dholpur stone on to the left tower. Compressed laminate sheets in exposed wooden grains add to the material palette. Altogether the volumes & voids forming the face of the house are a result of interior space planning & layout.

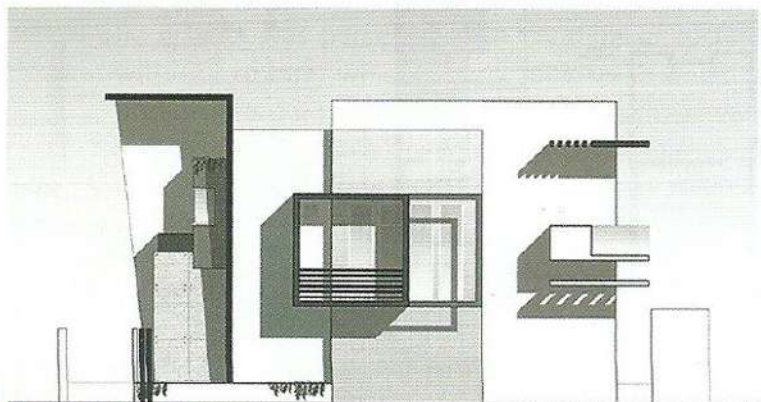


CONCEPT



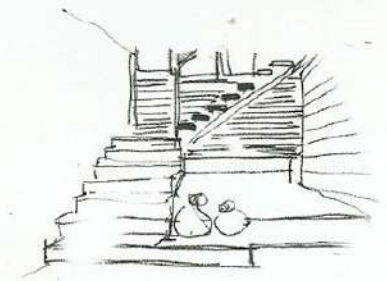


FRONT ELEVATION



WEST SIDE ELEVATION

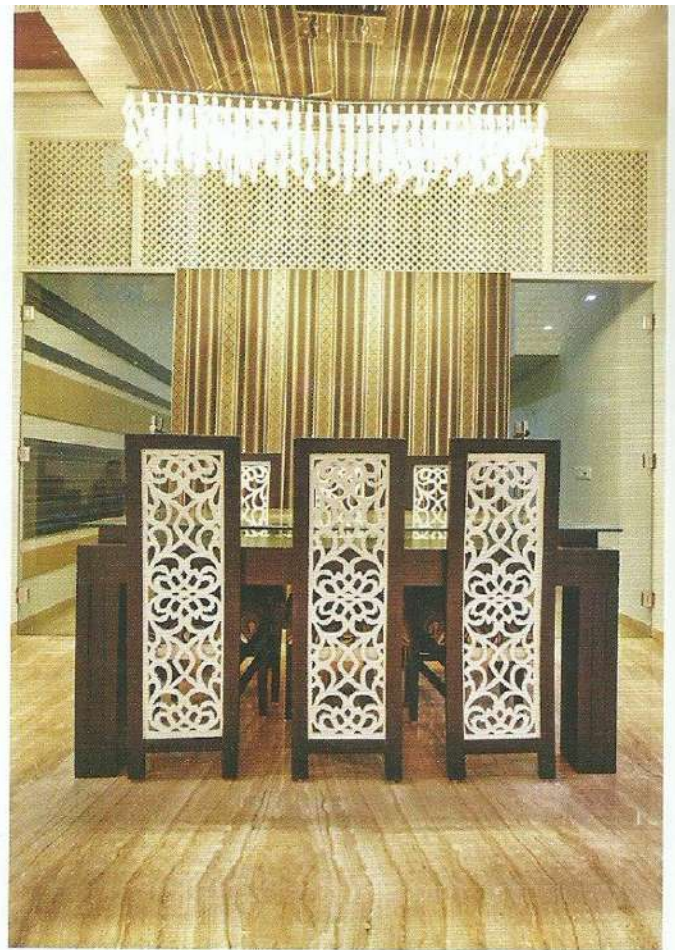




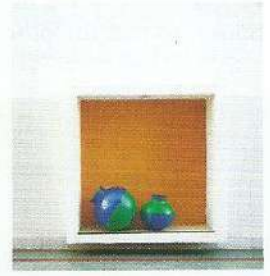
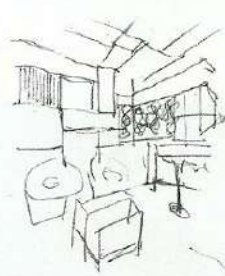
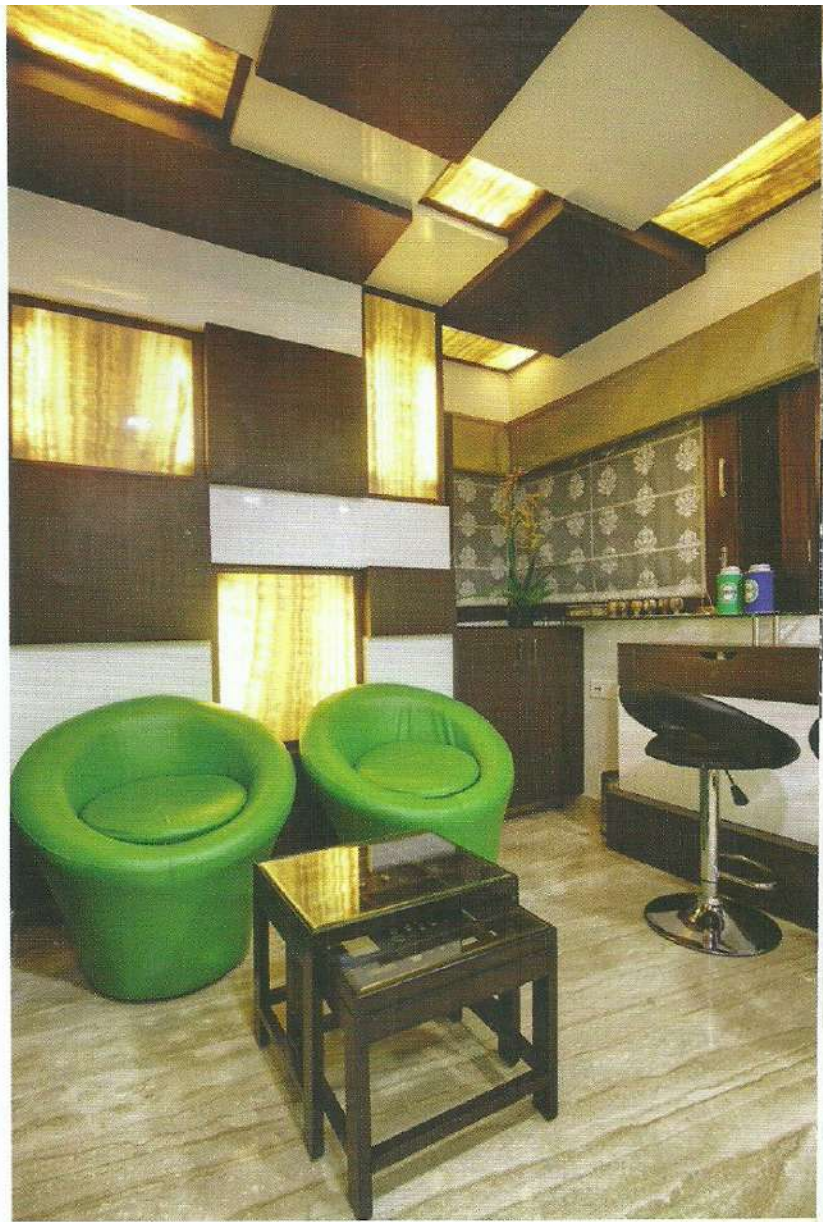
The interiors of the house can be seen as a mix of modern as well as traditional aspect of design evolving as the contemporary India. The circulation pattern gives rise to a dramatic story within and beyond, untold everyday of existence. The whole house catering to a small family of four revolves around and about a dense green focal point; the impact of the so created courtyard can be felt from the entrance as well as the private areas of the house. Here, the "plus" is actually two axes which generated 4 rectangles within a square that goes from end to end of the plot. This in turn leads to a comfortable travel of air and natural light through-out the house.




The courtyard has a sunken pebble bed with glass top, which acts as a stage hosting the court. Italian stone "Diana" has been used throughout the flooring, with its grains leading to the court. Wooden flooring is also used at places to add warmth. A lot of sit-outs have been planned & placed at various intervals within the house to add story. Extensive use of jali can be seen as partitions which are then repeated in furniture as well. The ceiling of the lobby leading to the court is finished with veneer backed by commercial board which follows through the glimpses of backlit onyx stone in Puja, sea green lacquered glass in Kitchen, as well as a wall of wallpaper in the Dining. Traditional inserts can be seen in the rear door leading to the backyard which overlooks the coffee corner through the double height where the "Palm" reaches its footstep. The backyard hosts a small shower pool adjoining the garden.



A small bar sits as a vertical extension to the drawing room at the mezzanine level with a small pantry, a washroom & a private balcony. This area is enclosed with a lot of backlit onyx stone, white PU pigment paint & dark veneer where green fabric on the furniture adds youthfulness. The master bedroom & the children's bedroom are designed to evolve as two characters with former being warm & the latter being young. The master bedroom has a play of browns and off-whites added by Victorian wallpaper & neo-Victorian wall lights as well as a chandelier. The raised study in the children's room has a glossy pigment paint with pastel green laminate adding to the blue & white pin-up board. The same colour palette is repeated on the rug & curtains.



A plenty of hanging lights & custom-designed ceiling lights have been used throughout the house adding glamour and warmth. The threshold between the ground and the first floor has a four paneled false wall water-painted with a splash of multiple colours by the designers themselves. Altogether it's a house with spaces of varying identities yet similar character. 





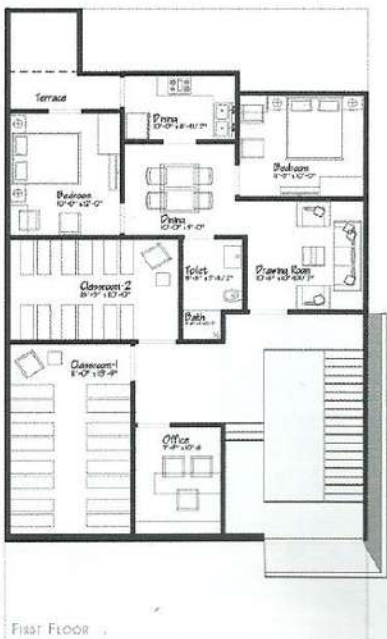


**FACT FILE:**

- Project Name : **Residence: The Slate House**
- Location : Panipat, Haryana
- Design Team : Ar. Ankita Sweety & Ar. Pratyosh Chandan
- Architect Firm : Studio An-V-Thot Architects Pvt. Ltd.
- Completion Date : June 2015
- Built-up Area : 1510 Sq ft.
- Plot Area : 227 sq yards

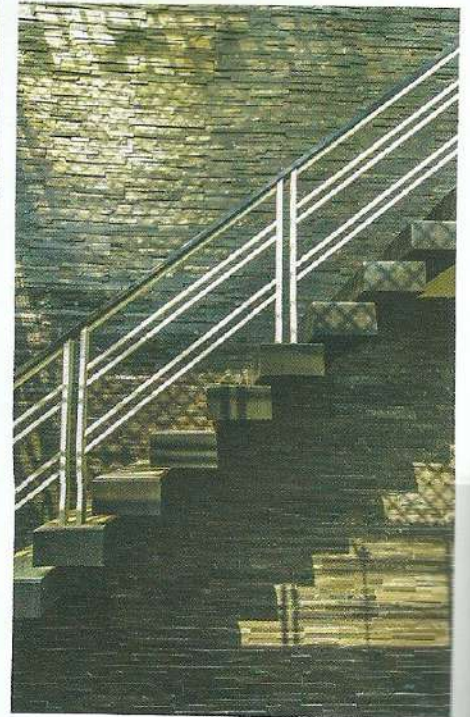
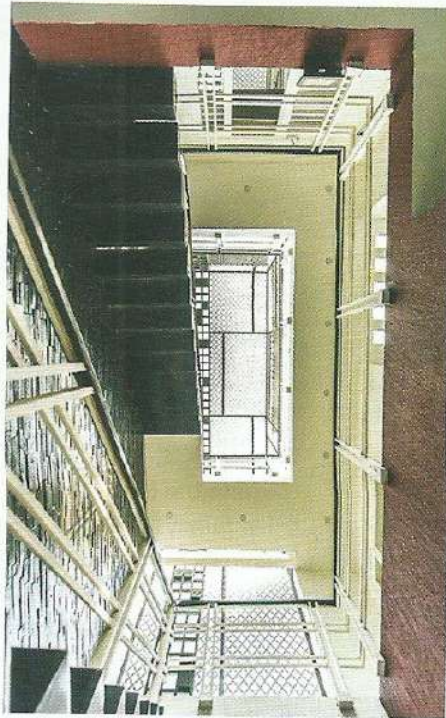
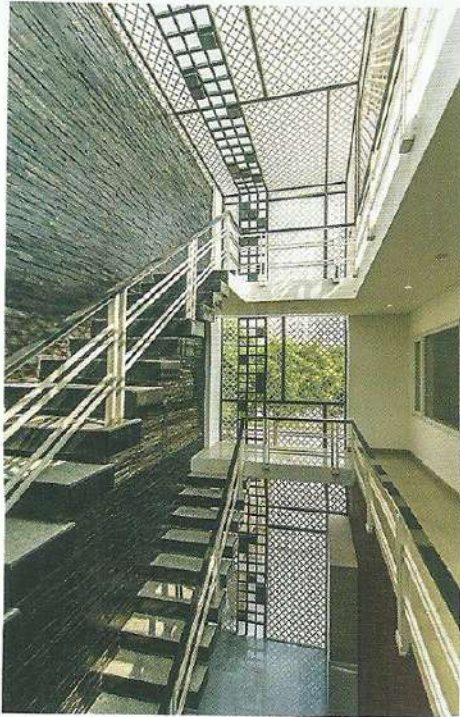
don't feel disturbed with the inflow & gathering of so many students around at the commencement of classes. The building with only road in the front & other's property on the remaining 3 sides had to be closed from the front where the Classrooms were placed to avoid distractions to students & disturbance to the neighbors. In order to achieve that, the front portion of the house has been divided into two parts, one with the solid facade & the other acting as the light well using perforated MS box. The MS box acts as a division between the private & the common areas to the family residing in & students coming through.

Where the blank facade reflects the disciplined nature of the client & his family; the love, happiness, trust & sharing between them is reflected by the perforated MS box. The left block has green Chail tree in front of majestic black Himachal stone & white perforated MS box on the right. The Maroon shade in between adds life to the whole building. The black





stairs inside the perforated MS box looks playful with the ever-changing shadow pattern all day. The success of this space is achieved by the interplay of light and shadow, over the black stone-clad cantilevered stairs; through the jaali which converts these stairs to more than just a circulation space adding drama while giving a sense of openness. A thoughtfully articulated simplistic facade creates a statement of its strong presence in the society and expresses the boldness of



slate stone dominates the facade giving a bold edge to it which is contrasted by the subtle hue of maroon, balanced together by a hue of pale cream resonating the strong yet subtle character of the client. The boundary wall has also been kept simple & has repetitive pattern of square boxes as on the vertical perforated MS box which further continues to become the main gate of the house. The ramp & green patch in the front acts as balancing element to the whole composition. The open



contrasting colors and volumes. To avoid dull monotony, the volumes are created by vertical elements over the left and cubical punctures given as an interplay of volumes; also acting as shading device to fenestrations. On to the right what holds attention are the concealing MS jaali panels; a blend of traditional with modernist effect using organic motif patterns combined with the geometrical shapes. The jaali stands overlooking the garden in front.



hued furniture defining the space in its own sense. The minimalist dining hangs to the dramatized wall clad with slate stone & mirror mosaic at the ends. Tailor made U-shaped modular kitchen with well-planned services segregates itself with the other areas to an entirely different aura yet connecting with the rest of the spaces through the vertical wooden members placed at a different angles present at the entrance and the monochromatic color scheme. Black and white are two such colors that has been used to make bold visual statements and create dramatic and exquisite ambience. The boldest choice of material have been used to select the flooring of the whole house as Kadapa stone all along with white epoxy filling in between the 6" X 6" stone tile.


As one enters this house the living room is the first to be experienced. Crisp, bold edged contemporary sofas in soft dull gold allows legs-up relaxation dominating the living room lying in front of a custom designed table at levels bringing life into the intrinsic floral jaali clad backlit ceiling. Ingeniously placed levelled up lobby which connects to the dining and the kitchen; has its own play with dull gold organic patterned wallpaper falling from ceiling to wall blending with the dark





To compliment it the same groove pattern finish has been done over the Amirah's and the side tables. Another bedroom consists minimal approach to interiors keeping it subtle, with the wooden layered bed back at the dark wallpaper backdrop wall. On the contrary the third room has a charm of youngness in it. The son being the hardcore Real Madrid fan wanted his room to have the color theme based on his favorite football team. The bright shades of Yellow & Blue have been interplayed with the hues of light grey to balance the whole setup to keep it subtle yet lively.

Upper floor consists of the classrooms along with other spaces to cater the needs of the client. To avoid clutter & free movement, the stairs & the lobby has been kept wider than usual as it would have been in a 227 yards plot generally.

All in all the house is a complete package of cleverly incorporated spaces; playing with materials and geometry to provide a dynamic yet humane environment for the client and his family. 

Being a small plot holding the numerous requirements of the client, one major requirement was to keep the bedrooms in the private areas as far as possible. So, while one enters the living area the layout has been kept such that the bedrooms cannot be seen from the living room. Materials & colors have been repeatedly resonated throughout the house and has been played with at different spaces giving rhythm and harmony to spaces. The master bedroom features a custom designed king sized teak wood bed consisting of sharp grooves; laid across the black flooring.

